

**SPECIAL NOTE(S):
ELEVATED MANUFACTURE/MOBILE HOMES**

(1) MOBILE HOMES NOT PROVIDED WITH MANUFACTURER'S INSTRUCTIONS FOR STABILIZATION DEVICES & THEIR INSTALLATION SHALL COMPLY WITH THE FOLLOWING REQUIREMENTS. WHEN MORE THAN ONE-FOURTH OF THE AREA OF A MANUFACTURED-MOBILE HOME IS INSTALLED SO THAT THE BOTTOM OF THE MAIN FRAME MEMBERS ARE MORE THAN 3'-0" ABOVE GROUND LEVEL, THE MANUFACTURED/MOBILE HOME STABILIZING SYSTEM SHALL BE DESIGNED BY A QUALIFIED REGISTERED PROFESSIONAL ENGINEER OR ARCHITECT AND THE INSTALLATION SHALL BE APPROVED.

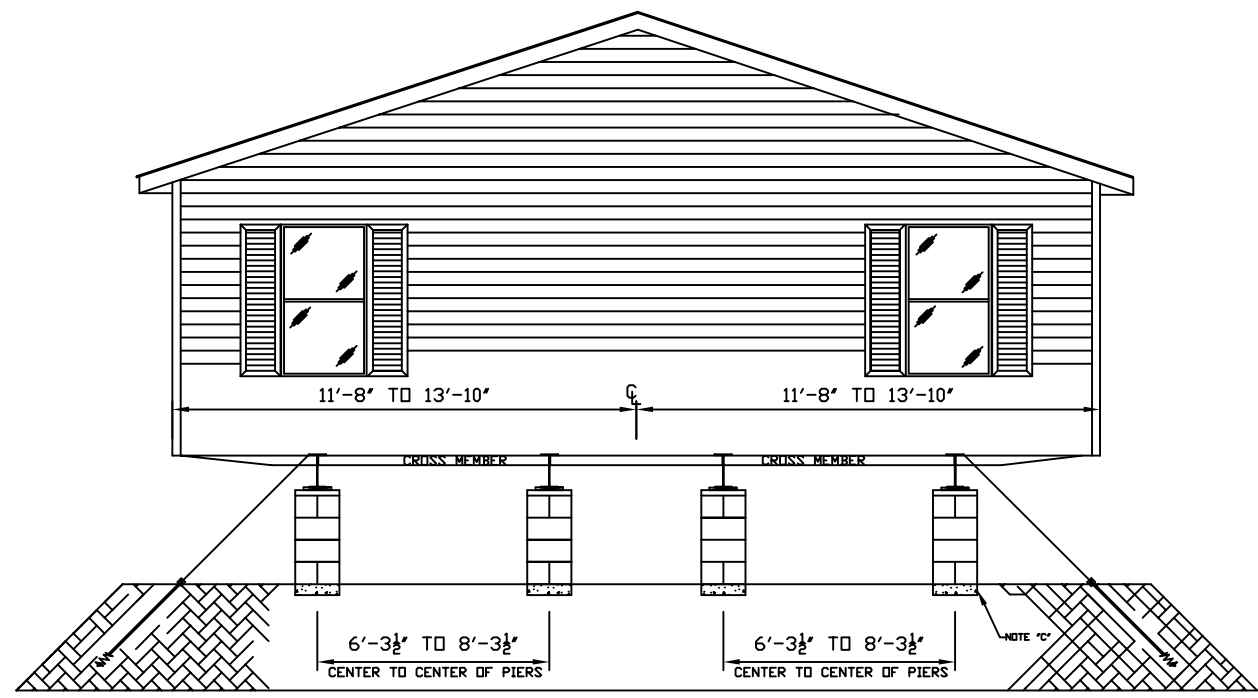
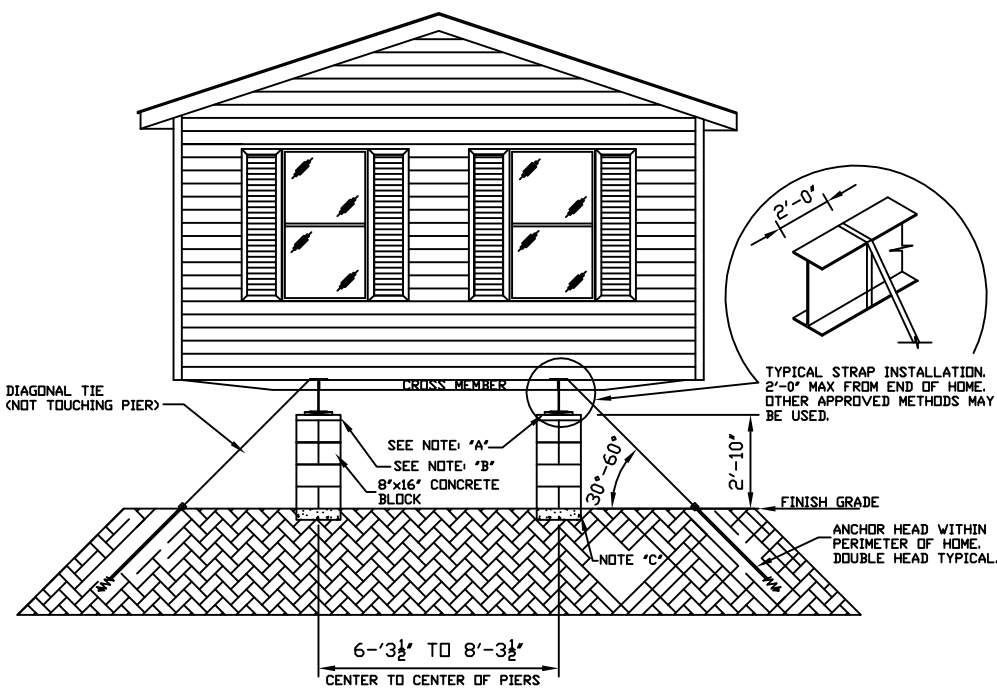
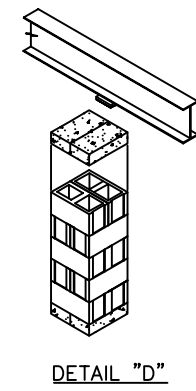
(2) THE CONSTRUCTION OF POURCHES & DECKS MUST BE CONSTRUCTED TO COMPLY WITH THE GUIDELINES FOR BUILDING A DECK. AVAILABLE FROM RANDOLPH COUNTY.

NOTE "A"
HARDWOOD SHIMS - MUST BE DRIVEN TIGHTLY AND MUST NOT OCCUPY MORE THAN 1" OF VERTICAL SPACE.

NOTE "B"
CAP BLOCK
(2) 8"x16"x4"
SOLID CONCRETE OR EQUIVALENT

NOTE "C"
FOOTING
(2) 8"x16"x4" SOLID BLOCK
4" BELOW FINISH GRADE FOR PIER FOOTING.

DETAIL "D"
TYPICAL PIER SETTING



| | | |
|------|----|-------|
| DATE | BY | CHKD. |
| | | |
| | | |
| | | |
| | | |

REFERENCE DRAWING

| | |
|---------------|----|
| CADD File | |
| Drawn By | |
| Checked By | |
| Last Revision | |
| Date | |
| Scale | |
| 3/8" = 1'-0" | |
| Project No. | |
| | |
| Drawing No. | |
| | |
| Sheet | Of |