



PARTNERSHIP PROPOSAL

RANDOLPH COUNTY AGRICULTURAL CENTER

www.randolphcountync.gov/ag-center



Grow the Future: Partner with the Randolph County Agricultural Center



We invite you to become a valued partner of the new Randolph County Agricultural Center, a community-driven space that will provide education, resources, and opportunities for residents, farmers, businesses, and organizations. Your support will help us establish a center that serves as a hub for agriculture, small business development, food security, and community events.



PARTNERSHIP TIERS & BENEFITS

Legacy Partner – \$10,000

As a Legacy Partner of the Randolph County Agricultural Center, your commitment to agriculture, education, and community development will be permanently honored with a 12"x6" plaque displayed in the lobby of our Resource Center. This recognition serves as a testament to your generous support and dedication to strengthening Randolph County's agricultural future.

In addition to this prestigious recognition, your partnership includes advertisement in our promotional brochure and on our facility website, ensuring your name is highlighted as a key supporter of agriculture and community development in Randolph County.

Champion Partner – \$5,000

As a Champion Partner of the Randolph County Agricultural Center, your dedication to agriculture, education, and community growth will be proudly recognized with a significant 10"x4" plaque permanently displayed in the Resource Center. This honor showcases your commitment to strengthening Randolph County's agricultural future and supporting the farmers, families, and businesses that rely on it.

In addition to this prestigious recognition, your partnership includes advertisement in our promotional brochure and on our facility website, ensuring your name is highlighted as a key supporter of agriculture and community development in Randolph County.

Sustaining Partner – \$2,500

As a Sustaining Partner of the Randolph County Agricultural Center, your commitment to agriculture, education, and community development will be recognized with a 8"x3" plaque permanently displayed in the Resource Center. This honor highlights your dedication to strengthening Randolph County's agricultural future and supporting the farmers, families, and businesses that make our community thrive.

In addition to this recognition, your partnership includes advertisement in our promotional brochure and on our facility website, showcasing your support for local agriculture and community growth.





RANDOLPH COUNTY GOVERNMENT

PARTNERSHIP OPPORTUNITIES BUILDINGS

Event Center - \$100,000

For \$100,000, your business or organization can claim the exclusive naming rights to the [Your Name] Event Center for 10 years, establishing a lasting presence in a space dedicated to education, innovation, and community connection. The space is 9,254 square feet and can seat up to 540 people with opportunities for two signs to be prominently displayed on the interior and exterior of the center. The exterior sign will be an attractive monument style representing your brand and the interior sign will be located on one highly-visible wall. This level also includes a 12" x 6" lifetime plaque on the donor wall located in the Resource Center.

This venue will serve as a premier gathering place, hosting career fairs, industry meetings, community fundraisers, and educational programs, providing unparalleled exposure for your brand while directly supporting the growth of Randolph County.

Your name will be synonymous with progress, education, and economic development in Randolph County. Seize this rare opportunity to make an impact for the next decade!

Arena - \$100,000

James River Equipment Arena

For \$100,000, your business or organization can claim the exclusive naming rights to the [Your Name] Arena for 10 years, establishing a lasting presence in a space dedicated to education, innovation, and community connection. The [Your Name] Arena will be a premier space for livestock education, training, and sales, serving farmers, businesses, and the greater community. With Randolph County leading the state in beef cattle and goat production, this arena will be a vital hub for hands-on learning, safe livestock handling, and economic opportunities for local producers. This area is 18,110 square feet with seating for 293 and opportunities for two significant signs to be prominently displayed. This level also includes a lifetime 12"x6" plaque on the donor wall located in the Resource Center.

Beyond agriculture, this versatile space will also be available for educational programs, private livestock sales, industry training, and public events, making it a key gathering place for farmers, businesses, schools, and organizations.

Your name will be synonymous with progress, education, and economic development in Randolph County. Seize this rare opportunity to make an impact for the next decade!

View the spaces pgs. 13-17



PARTNERSHIP OPPORTUNITIES

FOUNDATIONAL SPACES

Naming rights are available for the Food Hub & Commercial Kitchen—two cornerstone spaces within the Education and Resource Center, securing your legacy for a full 10 years. At the end of the term, sponsors will receive first right of refusal to renew their partnership and continue their meaningful presence in the heart of the center. Each partnership includes a 12" x 6" plaque with your name and logo (if applicable), prominently displayed outside of your named space, honoring your support of local food, education, and entrepreneurship. A second 12"x6" plaque with your name and logo (if applicable), will be displayed in the Resource Center lobby.

Food Hub - \$20,000

We are seeking a dedicated partner to help shape the future of the Food Hub—an innovative, community-powered space designed to uplift local food producers, empower small businesses, and foster connection across our region. This is more than a partnership; it's an invitation to invest in a space where collaboration, sustainability, and economic growth intersect. With support from Randolph County and Cooperative Extension, and daily operations led by a nonprofit, the Food Hub is poised to become a cornerstone of local food resilience.

As a Naming Partner, your generous contribution will be recognized with naming rights to the space, honoring your commitment to community growth and innovation. Your legacy will be celebrated with a 12"x6" plaque on the donor wall in the Resource Center—cementing your role in a project that nourishes our region from the ground up.

Commercial Kitchen

Tobacco Trust Fund Commercial Kitchen

We are seeking a visionary partner to lend their name to the Commercial Kitchen—an anchor space within the Ag Center designed to support food-based entrepreneurs, community education, and regional innovation. This is more than a naming opportunity—it's a chance to leave a lasting mark on a facility that will nourish both people and ideas for years to come. Your brand will be permanently tied to a space where small businesses grow, skills are shared, and local food systems thrive. Together, we can create a legacy that feeds our community in every sense of the word. This level also includes a 12"x6" lifetime plaque on the donor wall located in the Resource Center.

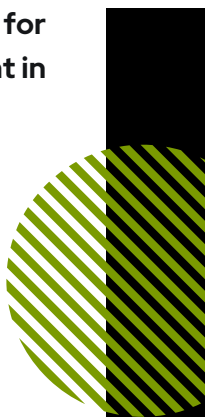


PARTNERSHIP OPPORTUNITIES EDUCATIONAL SPACES

Naming rights are available for each of these essential spaces within the Education and Resource Center for \$10,000 per space, securing your legacy for 10 years. At the end of the term, sponsors will have the first right of refusal to continue their partnership and maintain their impactful presence in the center. Your partnership includes a 12"x6" plaque with your name and logo (if applicable).

- **Demonstration Kitchen:** Will offer hands-on classes in food preservation and healthy cooking techniques, enhancing local food resilience. (seats 12)
- **Randolph Communications Digital Skills Lab CLAIMED:** Will equip residents with essential technology skills, enabling access to remote work, online education, and telehealth services. (seats 48)
- **4-H Classroom:** will provide a dedicated space for youth development programs. (seats 16)
- **Educational Classrooms (A or B):** Will support agricultural training, workshops, and community learning initiatives. (seats 96)
- **Boardroom (A or B):** Will serve as a professional meeting space for organizations and stakeholders. (seats 12)
- **Gardener Lab:** Will offer hands-on experiences in horticulture, sustainability, and agricultural innovation, fostering a deeper connection to the land and food systems. The Greenhouse partnership includes the adjoining outdoor learning space equipped with four picnic tables. (Lab seats 24)

Together, these spaces will provide endless opportunities for education, economic development, and community engagement in Randolph County.





Partnership Expectations

Your partnership will ensure that the Randolph County Agricultural Center becomes a lasting resource for education, agriculture, business, and community engagement. If you are interested in supporting this impactful project, we would love to discuss opportunities that align with your mission and values.

To maintain the integrity and mission of the Randolph County Agricultural Center, partnerships should follow clear guidelines that align with community values, transparency, and long-term sustainability.

Here are some key rules to consider:

1. Integrity & Alignment with Mission

- Partners must align with the civic-minded mission of the center, supporting education, agriculture, food security, and community well-being.

2. Length & Renewal of Sponsorship Agreements

- Naming rights agreements should be long-term (minimum 10 years), with an option for renewal or re-evaluation at the end of the term.

3. Community Reputation & Ethical Considerations

- Partnerships must maintain a positive reputation within the community and should not be involved in scandals or unethical business practices.

4. Partnership Recognition & Branding

- Partners will receive recognition in ways that fit the purpose of the center, such as plaques, digital mentions, and print materials.

5. Financial Transparency & Usage of Funds

- Partnership funds will be used for construction, furniture, and ongoing operations for the facility.

By following these guidelines, the Randolph County Agricultural Center can build strong, ethical partnerships that support its mission while maintaining trust and integrity within the community!

Randolph County reserves the right to select those partners who best complement the mission and values of the Agricultural Center as stated herein.

RANDOLPH COUNTY, NC



Agricultural Center Information

Randolph County Agricultural Center: A Hub for Growth, Innovation, and Community

The Randolph County Agricultural Center is more than just a facility—it's a bold step forward for Randolph County and the surrounding region. It is designed to enhance the programming by N.C. Cooperative Extension, Randolph County Center and Soil and Water departments. Created to strengthen economies, enhance resiliency, and foster community, this center will serve as a dynamic hub where people and organizations come together to shape the future of agriculture, education, and local food systems.

By providing a space for innovation, collaboration, and hands-on learning, the Center will empower individuals, businesses, and organizations to build stronger Farm, Food, and Family systems. From supporting small farmers and food entrepreneurs to equipping students with real-world skills, this facility will have a lasting impact for generations to come.

A Space for Learning, Growth, and Opportunity

The Center's carefully designed spaces reflect its commitment to education, sustainability, and economic development. Key areas include:

- Event Center – A versatile venue for career fairs, industry meetings, and community celebrations. Endless possibilities for community involvement.
- Arena – Offering a space for livestock handling education, private sales, and special events.
- Food Hub – Connecting local producers with institutions and families to increase food security.
- Commercial Shared-Use Kitchens – Helping food entrepreneurs scale their businesses.
- Demonstration Kitchen – Teaching food preservation, nutrition, and cooking skills.
- Greenhouse – Providing hands-on agricultural education and fresh food for under-resourced families.
- Digital Skills Lab – Preparing residents for success in an increasingly digital economy.
- Educational Spaces – Allowing participants to learn and grow through hands-on or lecture style opportunities

Your Opportunity to Make an Impact

As we prepare to open the doors to this transformational space, we are offering exclusive sponsorship opportunities for businesses, organizations, and individuals who want to invest in the future of Randolph County. Partnership opportunities include naming rights for key spaces and tiered support. Your financial participation will position your support at the heart of innovation, education, and community development. Partners will receive public recognition, prominent branding opportunities, and the chance to be a driving force behind this regional hub for progress.

Join Us in Building the Future

The Randolph County Agricultural Center is more than just a project—it's a movement. It's about ensuring that Randolph County and its residents have the resources, knowledge, and infrastructure to thrive. By becoming a partner, you are investing in a stronger, more resilient community while positioning your business or organization as a champion of education, agriculture, and local enterprise.

Secure your spot in this legacy today. Naming rights are limited. To learn more about available opportunities and how your support can make a lasting difference, contact us today!

Randolph County Agricultural Center

Partnership Interest Form:



www.randolphcountync.gov

Thank you for your interest in supporting the Randolph County Agricultural Center! Please complete this form to be contacted on how to become a valued partner and help us build a lasting resource for education, agriculture, business, and community engagement.

We are happy to hear new and creative ideas for working together, even if they are not listed in the packet.

Partnership Request

- | | | |
|---|--|--|
| <input type="checkbox"/> Legacy Partner (\$10,000) | <input type="checkbox"/> Food Hub (\$20,000) | <input type="checkbox"/> Educational Space (\$10,000, fill in space below) |
| <input type="checkbox"/> Champion Partner (\$5,000) | <input type="checkbox"/> Commercial Kitchen | <input type="checkbox"/> Demonstration Kitchen |
| <input type="checkbox"/> Sustaining Partner (\$2,500) | | <input type="checkbox"/> Digital Skills Lab |
| <input type="checkbox"/> Event Center (\$100,000) | | <input type="checkbox"/> 4-H Classroom |
| <input type="checkbox"/> Arena (\$100,000) | | <input type="checkbox"/> Educational Classroom A |
| | | <input type="checkbox"/> Educational Classroom B |
| | | <input type="checkbox"/> Boardroom A |
| | | <input type="checkbox"/> Boardroom B |
| | | <input type="checkbox"/> Gardener Lab |
| | | <input type="checkbox"/> Greenhouse |

Contact Information :

First Name : Last Name :

Address :

Zip Code : Phone No : E-Mail :

Corporate Information :

Business/Organization Name : Website (if applicable) :

Email : Phone Number :

Mailing Address :

Would you like to receive information about future partnership opportunities at the Randolph County Agricultural Center?

Including, but not limited to, individual public or educational events/programs.

Yes No

Printed Name

Signature Of Author

Position

A member of our team will reach out after receiving your application to discuss next steps and explore the partnership in more detail.



RANDOLPH COUNTY GOVERNMENT

EXTENDED OPPORTUNITIES

Honor a loved one, celebrate a legacy, or show your support for our community with a lasting contribution to the Randolph County Agricultural Center. With a \$3,000 donation, you can dedicate a lifetime memorial or honorary bench, offering comfort and remembrance for generations to come. All benches are in highly visible areas outside of the Resource Center and Event Center.

For a more personal tribute, engraved bricks are available for just \$100, permanently placed outside of our high traffic areas to create a path built on community pride.

Looking for a bold statement? Prominent advertisement banner space, located in the arena, is available for \$500 per year, with renewal options to keep your business or tribute front and center.

Every option leaves a mark—be it in stone, steel, or spirit.

Benches (7" x 3") plaque



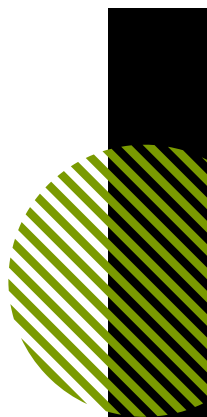
Personalized Engraved Bricks
(8"x4", 20 characters per line)

WE SUPPORT
AGRICULTURE

RANDOLPH COUNTY AGRICULTURAL CENTER

BRICK FUNDRAISER PROCEEDS BENEFIT THE
FUTURE OF AGRICULTURE IN RANDOLPH COUNTY

Banners (6'x4')



RANDOLPH COUNTY GOVERNMENT



First & Last Name: _____

Email Address: _____

Phone Number: _____

Number of Benches Purchasing: _____

1st Line: _ _ _ _ _
(one character per dash, spaces and punctuation count as a character)

2nd line: _ _ _ _ _
(one character per dash, spaces and punctuation count as a character)

3rd Line: _ _ _ _ _
(one character per dash, spaces and punctuation count as a character)

Here is an opportunity to leave your permanent mark in the community, or to recognize someone with a donation that will last a lifetime. Each personalized bench will support Randolph County Agriculture! Your bench will be displayed within the courtyard outside the entry doors allowing each person entering the building to see the names displayed before them. Don't miss this opportunity to be a part of history!

Proceeds benefit the future of agriculture in Randolph County.

Each bench will feature 3 lines of engraved text on a 8" x 2" plaque with 20 characters allowed per line. All text will be a standard size, font, and style. Greek letters and other symbols not found on a standard keyboard may not be used. All spaces and punctuation marks count as a character. Randolph County reserves the right to exclude orders that it deems to contain inappropriate language. Please submit your completed interest form to agcenter@randolphcountync.gov.

A limited total of four bench sponsorships are available, offered on a first-come, first-served basis.

Due to their exclusive nature, early commitment is strongly encouraged.





First & Last Name: _____

Email Address: _____

Phone Number: _____

Number of Bricks Purchasing: _____

1st Line: _ _ _ _ _
(one character per dash, spaces count as a character)

2nd line: _ _ _ _ _
(optional, one character per dash, spaces count as a character)

3rd Line: _ _ _ _ _
(optional, one character per dash, spaces count as a character)

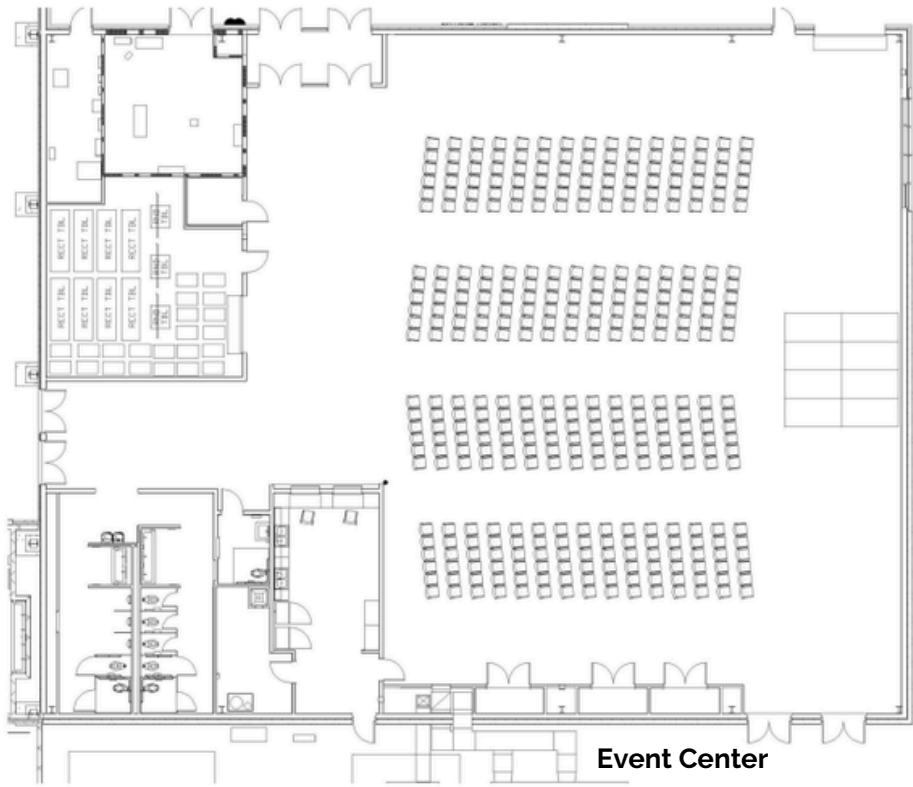
Here is an opportunity to leave your permanent mark in the community, or to recognize someone with a donation that will last a lifetime. Each personalized brick will support Randolph County Agriculture! The bricks will be displayed within the courtyard outside the entry doors allowing each person entering the building to see the names displayed before them. Don't miss this opportunity to be a part of history!

Proceeds benefit the future of agriculture in Randolph County.

Each brick (4"x8") will feature 3 lines of laser engraved text with 20 characters allowed per line. All text will be a standard size, font, and style. Greek letters and other symbols not found on a standard keyboard may not be used. All spaces and punctuation marks count as a character. Randolph County reserves the right to exclude orders that it deems to contain inappropriate language. Please submit your completed interest form to agcenter@randolphcountync.gov.

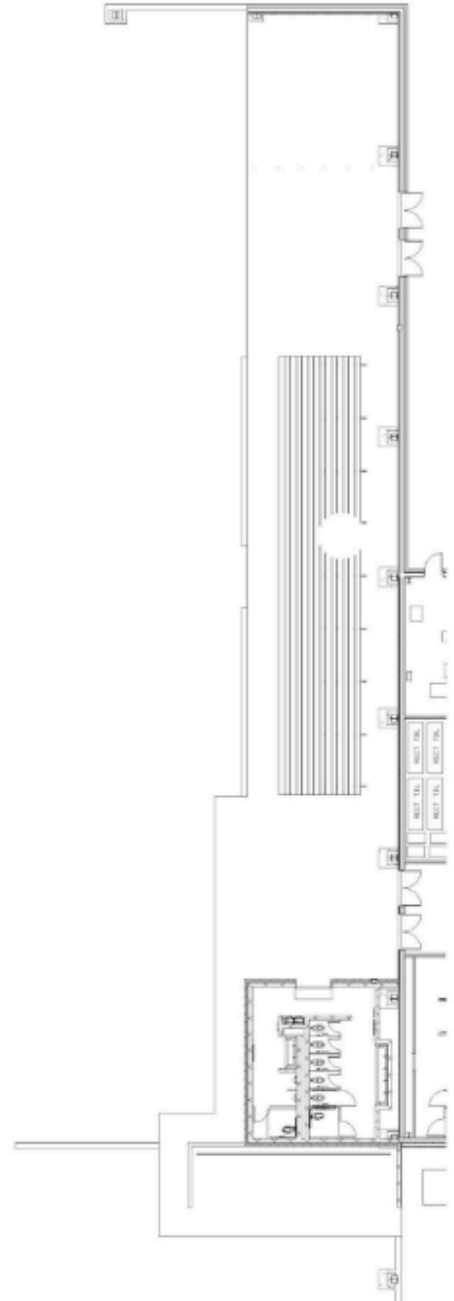
***Brick orders are placed once a minimum of 50 orders have been received.*



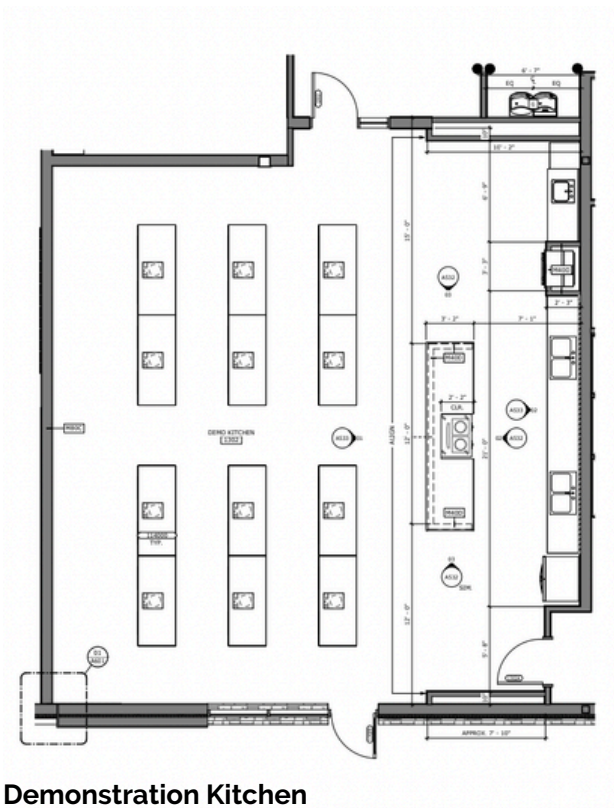
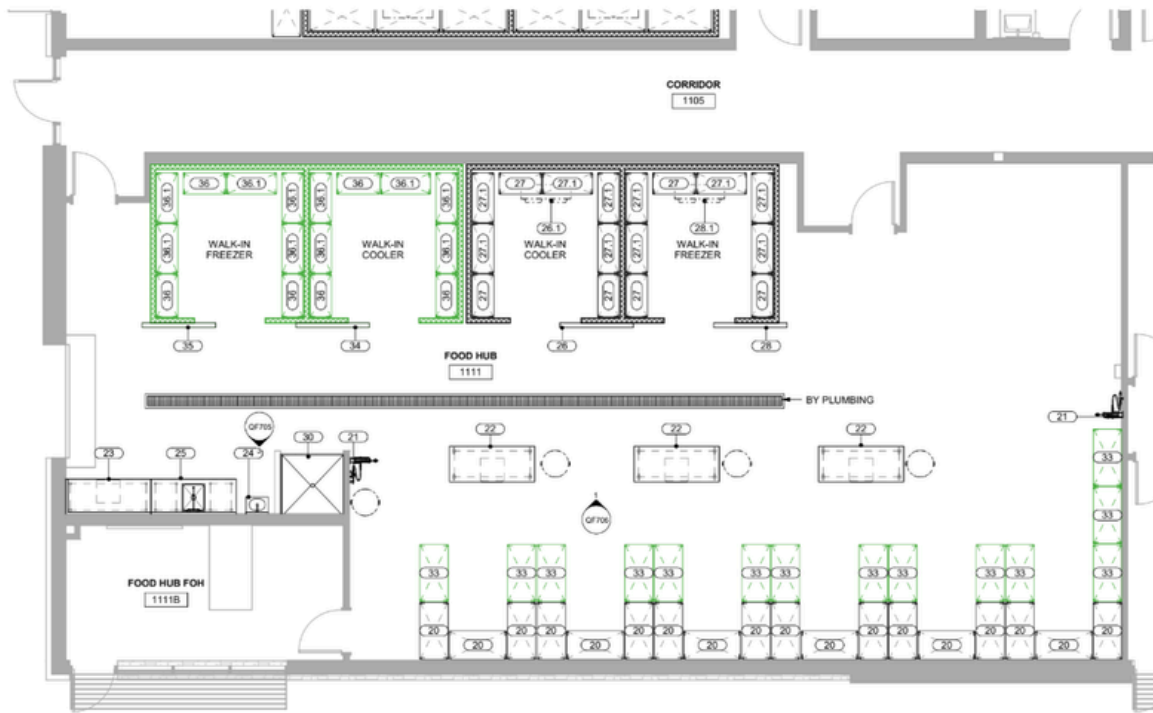


Event Center

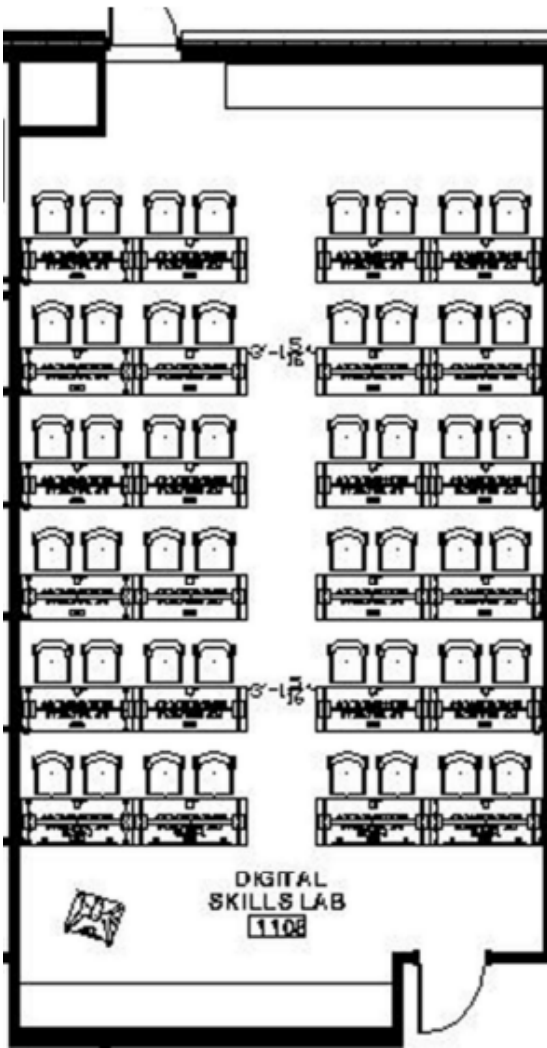
Arena



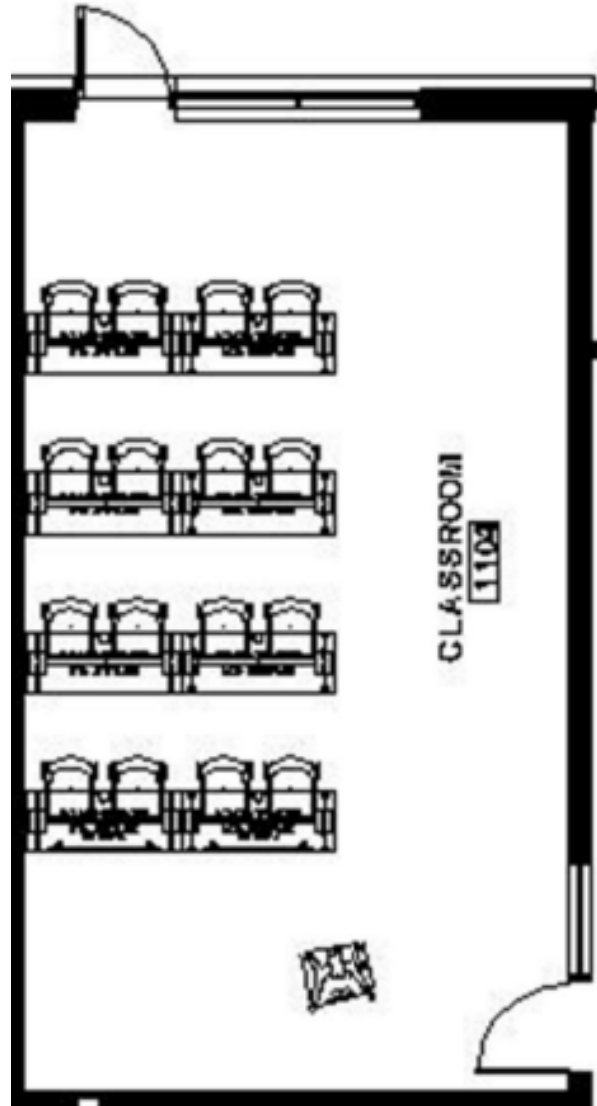
Food Hub



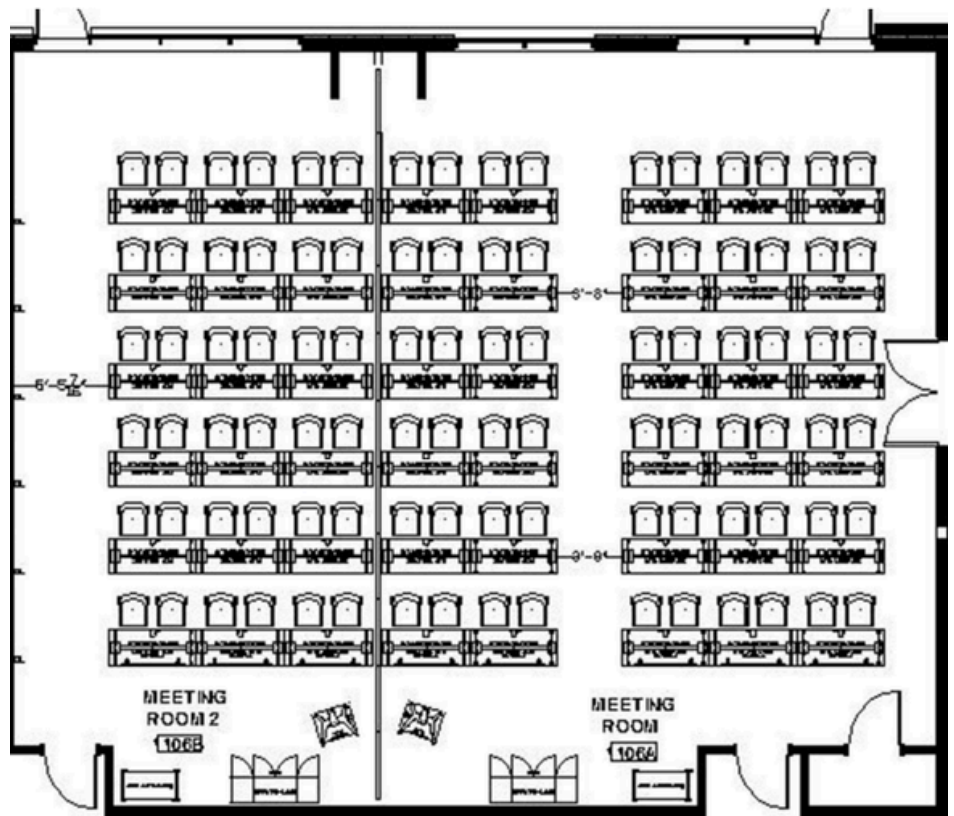
Demonstration Kitchen



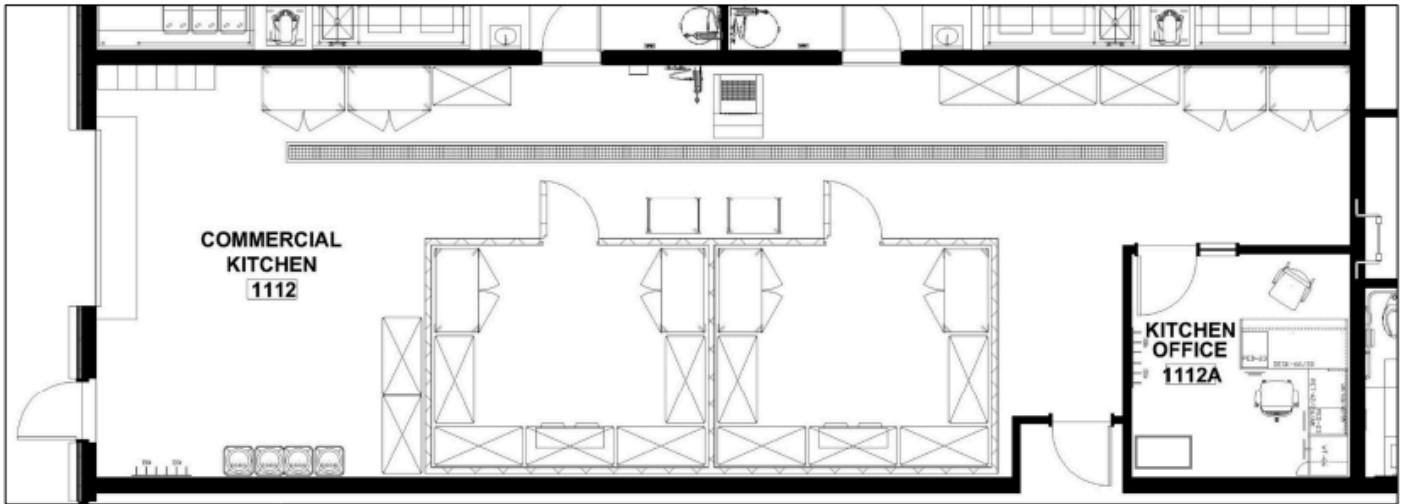
Digital Skills Lab



Classroom A

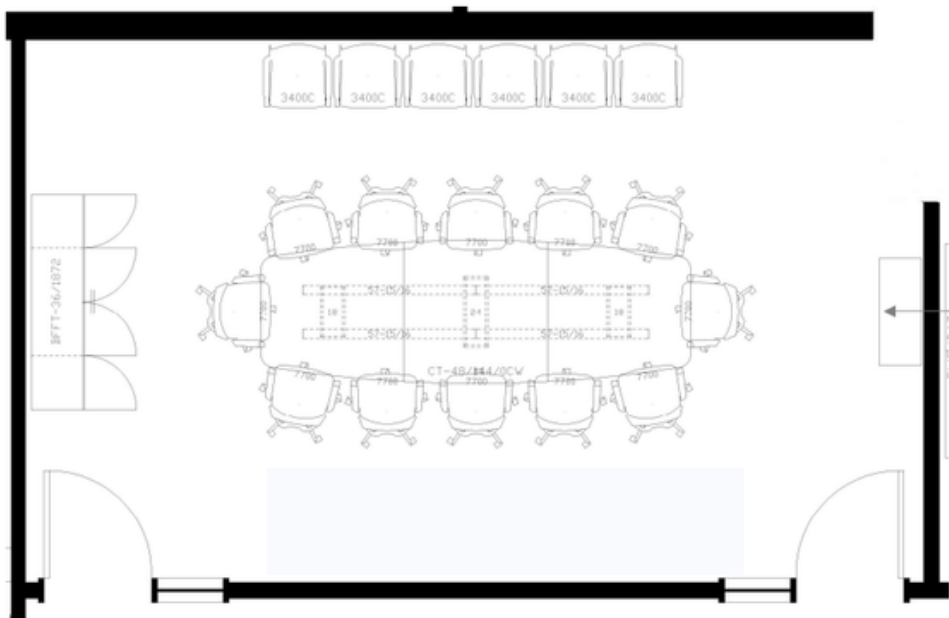


Classroom B

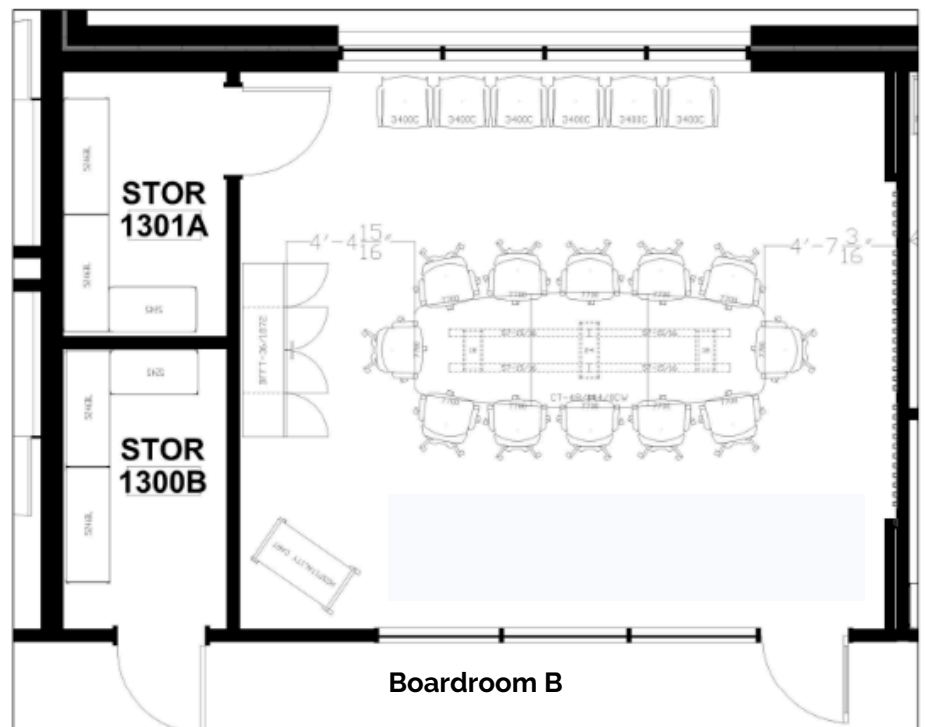


Commercial Kitchen A

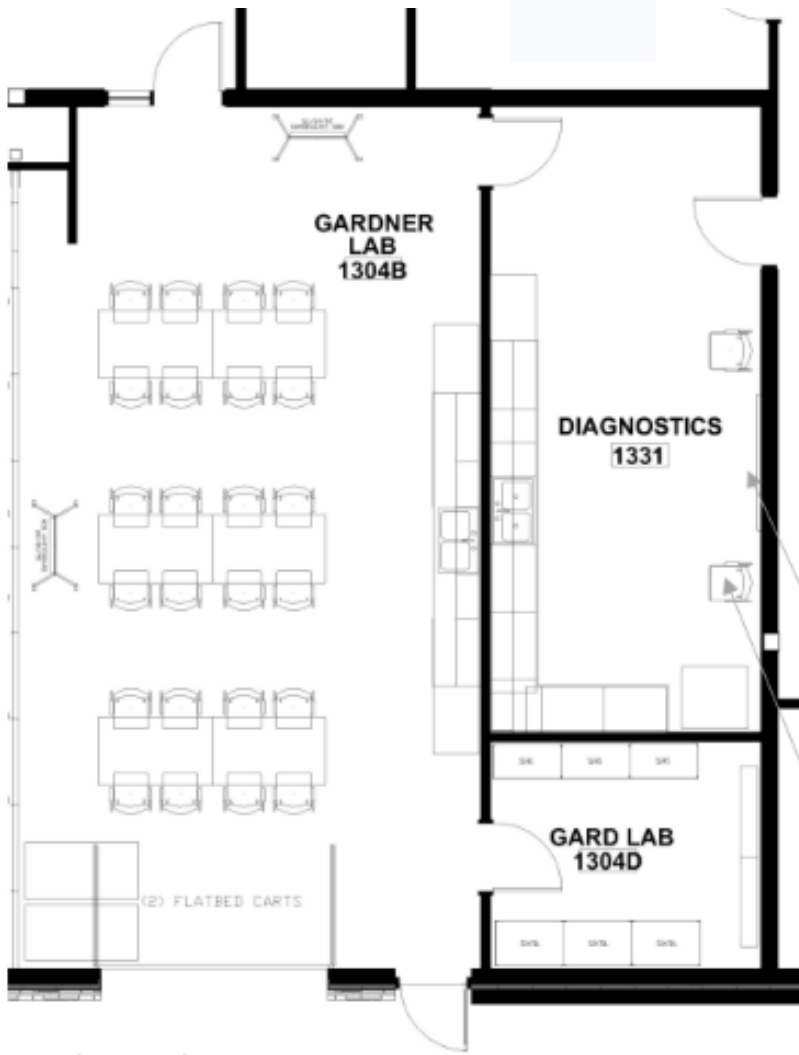
Commercial Kitchen B



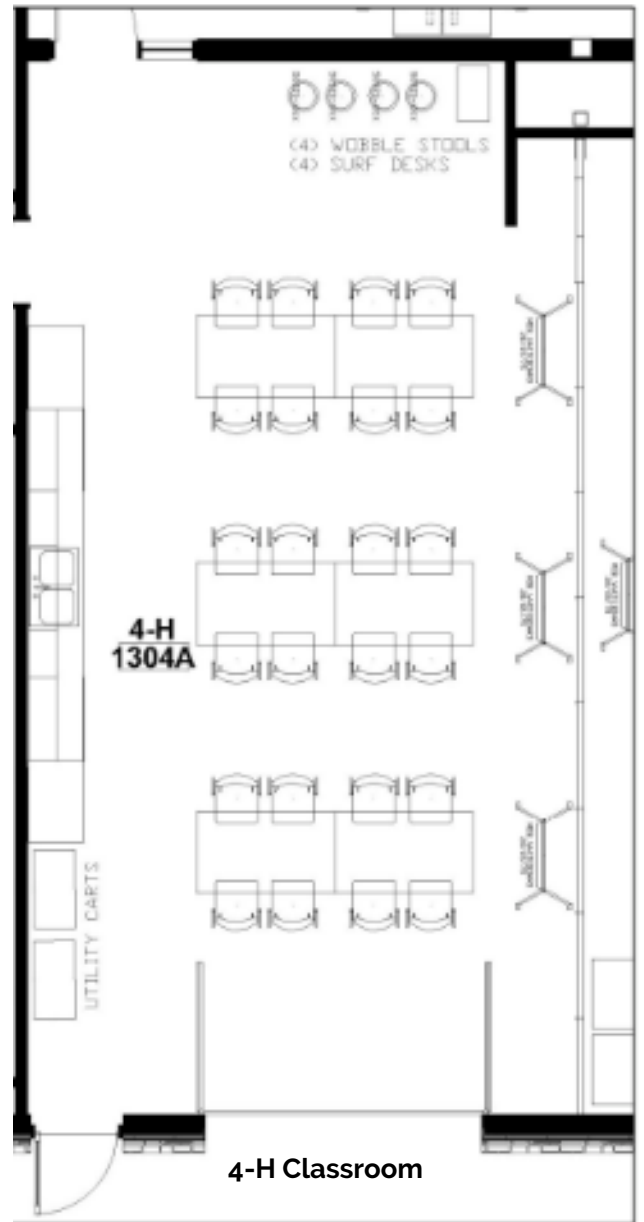
Boardroom A



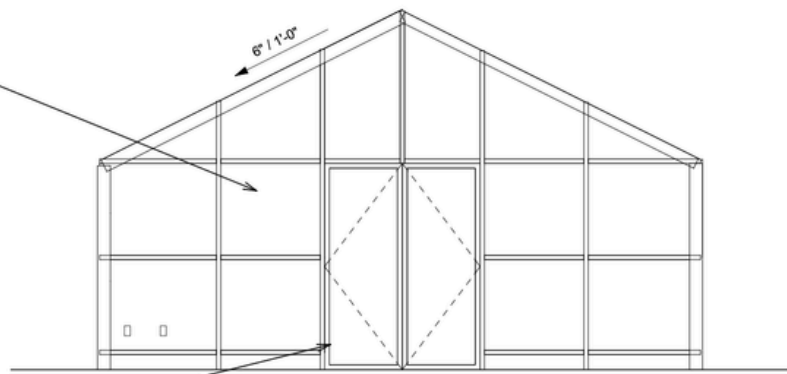
Boardroom B



Gardener Lab



4-H Classroom



Learning Greenhouse

